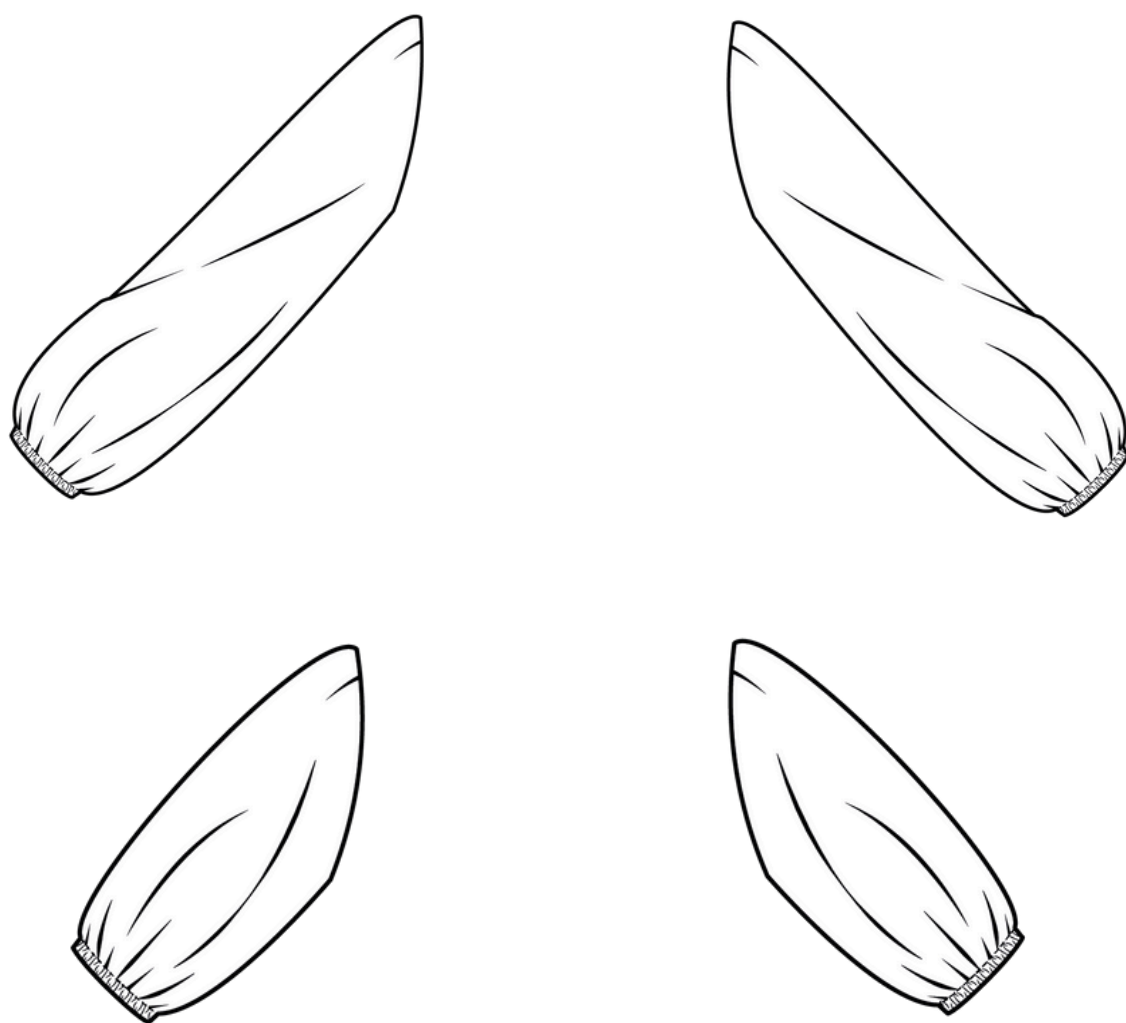


# Puff Sleeves Without Ruffle

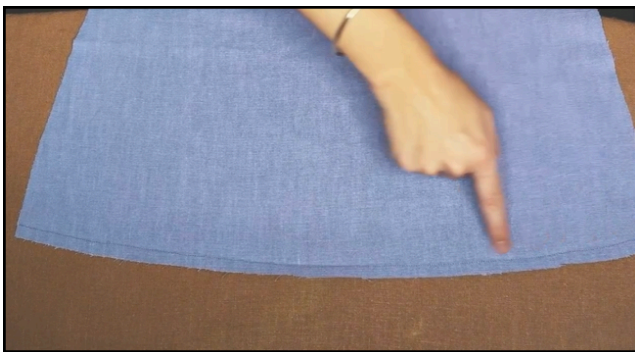


tales<sup>of</sup>  
threads



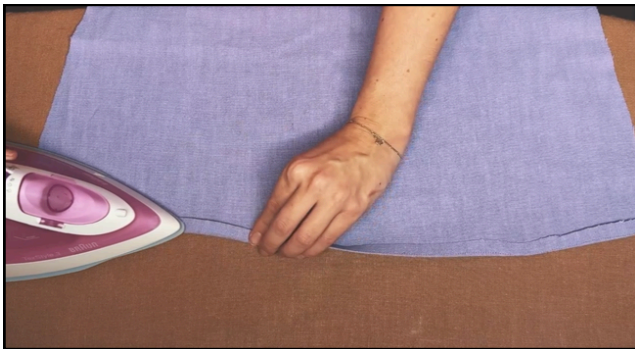
Video: 0:00

Welcome to our Puff Sleeves Without Ruffle Sewing Tutorial! Let's get started.



Video: 0:05

Sew a continuous stitch along the sleeve's bottom edge, keeping an 8 mm seam allowance.



Video: 0:09

Fold the hem over by 1 cm to the wrong side of the fabric and press it with an iron, using the 8 mm stitch line as a guide to ensure evenness. Then fold it over once more by the same amount. Do the same for the other sleeve.



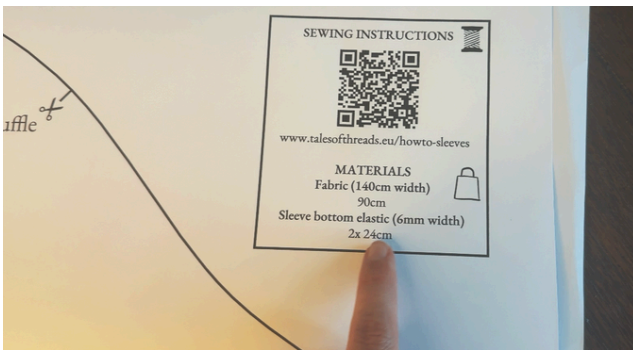
Video: 0:31

Fold the bottom open again and bring the sides of seams together with the right sides of the fabric facing inward. Pin in place. Sew along this seam with a 1 cm allowance, then overlock to encase the raw edge.



Video: 0:44

Fold over the bottom again. Remove the arm of your sewing machine. Put the bottom of the sleeves around the sewing machine. Stitch around the hem of the sleeve with an 8 mm seam allowance. Leave 1 cm open.



Video:0:59

Attach a threading needle or safety pin and thread it through the sleeve.



Video: 1:05

Attach a threading needle or safety pin and thread it through the sleeve.



Video: 1:12

Overlap the ends of the elastic by 2 cm and secure them with a zigzag stitch.



Video: 1:18

Put the entire elastic in the hem and close the gap.



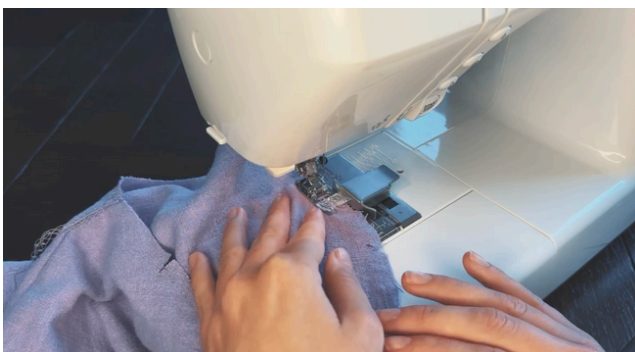
Video: 1:25

Now we are going to attach the sleeves. Place ruffle stitches in between the ruffle notches of the sleeve.



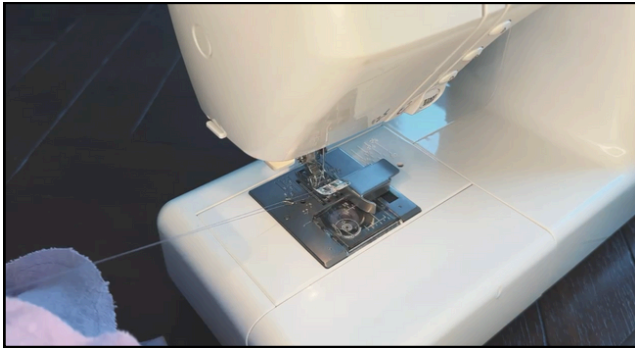
Video: 1:32

You make a ruffle stitch by putting the stitch length to the biggest size.



Video: 1:39

First, stitch a ruffle seam precisely 5 millimeters from the edge of the sleeve. Remember **not** to backstitch at either the beginning or the end of this seam.



Video: 1:49

Keep the thread tails long at both ends for easy adjustment later.



Video: 1:52

Then, carefully add another seam, this time positioning it 8 millimeters from the edge, close to the first stitch.



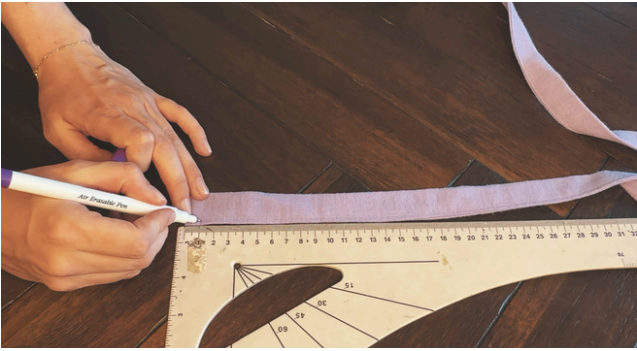
Video: 2:02

Your stitches have two top threads and two bottom threads. Hold the top threads and gently pull to create even ruffles. Do the same on the other side, until the ruffles are evenly divided.



Video: 2:20

Lay the top with its inside facing up. Then, flip the sleeve so the outside is showing. Insert the sleeve into the armhole, making sure the low notch is positioned at the front of the top.



Video: 2:37

Pin the sleeve in place, starting at the side seam of the top that should align with the side seam of the sleeve. Work your way up to the start of the ruffle stitch on both sides.



Video: 2:56

Now, check if the armhole's circumference aligns with the ruffled edge of the sleeve. If the sleeve appears longer, create more ruffles. Conversely, if the sleeve is shorter, gently pull the ruffles to reduce them.



Video: 3:13

Ensure that the amount of ruffles is the same on both sides of the shoulder seam.



Video: 3:20

Pin it together. For the ruffled sections, it's helpful to insert the pins horizontally. This way, you can sew over them without having to remove them, which helps in keeping the ruffles in place.



Video: 3:32

Stitch along the pinned line with a 1cm seam allowance to secure the sleeve to the armhole.



Video: 3:45

As you reach the ruffled sections, ensure your stitch line is just inside the ruffle stitches to keep them concealed.



Video: 3:58

Use an overlock stitch to neatly finish the raw edges, providing a professional look and preventing fraying. Follow the same steps for attaching the other sleeve.



Video: 4:06

You are done. See you next time!